

01773068591

# ON THE TRAIL OF THE PINK PANTHER

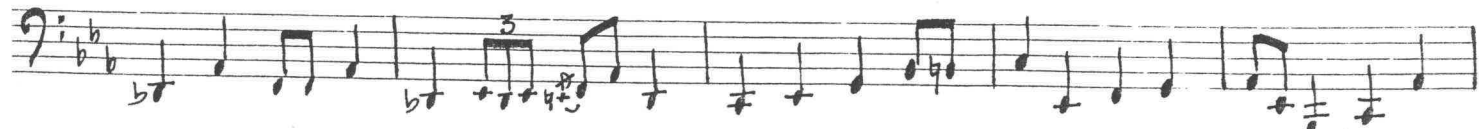
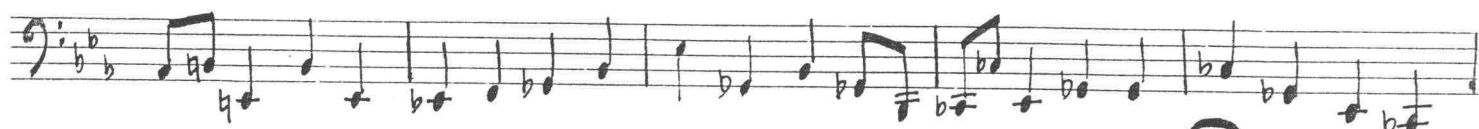
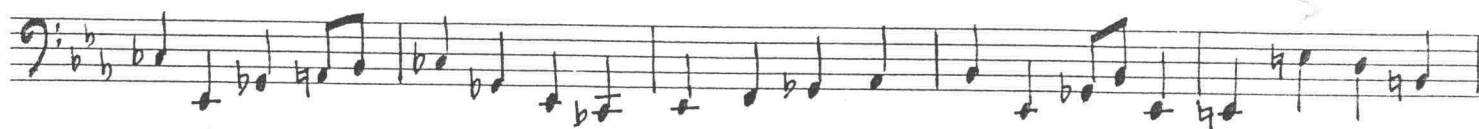
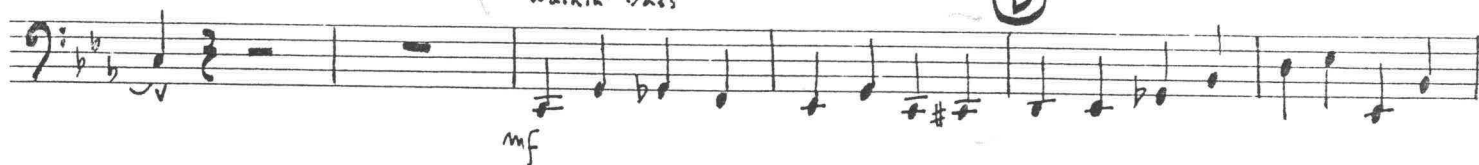
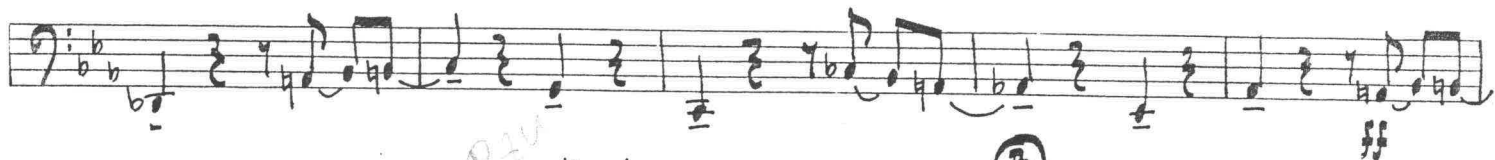
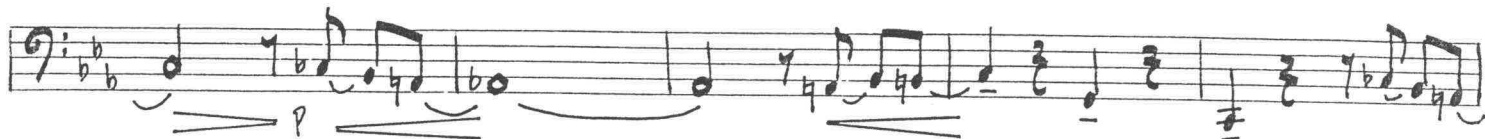
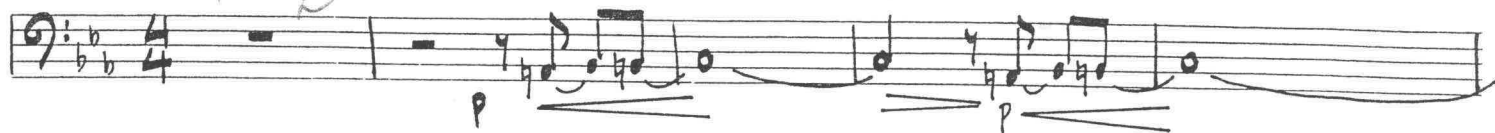
Bassoon

H. MANCINI

Arranged by Sebastian Gowder

♩ = 108    ♪ = 1, 3, 5

in 2



Passoon, ... Pink Panther

①

Handwritten musical notation on a single staff in bass clef with a key signature of two flats. It contains a sequence of eighth and quarter notes.

*P*

Handwritten musical notation on a single staff in bass clef with a key signature of two flats. It contains a sequence of eighth and quarter notes with a *P* dynamic marking.

Handwritten musical notation on a single staff in bass clef with a key signature of two flats. It contains a sequence of eighth and quarter notes.

*3* *9*

Handwritten musical notation on a single staff in bass clef with a key signature of two flats. It features a triplet of eighth notes and a quarter note, with a *3* above the triplet and a *9* above the quarter note.

②

Handwritten musical notation on a single staff in bass clef with a key signature of two flats. It contains a sequence of eighth and quarter notes with a *mf* dynamic marking.

Handwritten musical notation on a single staff in bass clef with a key signature of two flats. It contains a sequence of eighth and quarter notes.

Handwritten musical notation on a single staff in bass clef with a key signature of two flats. It contains a sequence of eighth and quarter notes.

Handwritten musical notation on a single staff in bass clef with a key signature of two flats. It contains a sequence of eighth and quarter notes.

Handwritten musical notation on a single staff in bass clef with a key signature of two flats. It contains a sequence of eighth and quarter notes.

Handwritten musical notation on a single staff in bass clef with a key signature of two flats. It contains a sequence of eighth and quarter notes.

Handwritten musical notation on a single staff in bass clef with a key signature of two flats. It contains a sequence of eighth and quarter notes.

Handwritten musical notation on a single staff in bass clef with a key signature of two flats. It contains a sequence of eighth and quarter notes.

[166]

*p*

[173]

*mf* *p*

*solo*

*mf*

3

[181]

*ten.*

[189] Mod. 4♩=96 OVER THE RAINBOW

*rit.*

[197]

2

[205]

*mf*

2

[213]

*sim.*

*mf*

[221]

*rit.*

*Soprano*

*\*Opt. final ending*

Brightly in 2

[232] TROLLEY SONG

*mf*

*p*

*OBBOE DA INIZIO*

[236]

[244]

4

\*Optional final ending bar may be omitted.